

**KOBELCO**

**SK500<sub>LC</sub>**



Note: This catalog may contain attachments and optional equipment that are not available in your area. And it may contain photographs of machines with specifications that differ from those of machines sold in your areas. Please consult your nearest KOBELCO distributor for those items you require. Specialist equipment is needed to use this machine in demolition work. Before using it please contact your KOBELCO dealer. Due to our policy of continuous product improvements all designs and specifications are subject to change without advance notice. Copyright by **KOBELCO CONSTRUCTION MACHINERY CO., LTD.** No part of this catalog may be reproduced in any manner without notice.

**KOBELCO CONSTRUCTION MACHINERY U.S.A. INC.**

22350 Merchants Way Katy, TX 77449  
Tel: 281-888-8430 Fax: 281-506-8713  
www.KOBELCO-USA.com

Inquiries To:

**KOBELCO** is the corporate mark used by Kobe Steel on a variety of products and in the names of a number of Kobe Steel Group companies.

**DRIVEN BY  
PASSION**



# Power Meets Efficiency



**23%**  
Higher fuel efficiency  
means  
"Efficiency"

Compared to S-mode on the SK480LC-8

Increase in  
productivity  
means  
"Power"

To urban centers, and to mines around the world. Kobelco's all-out innovation brings you durable earth-friendly construction machinery that's equal to any task, at sites all over the planet. Increased power and even greater fuel economy bring higher efficiency to any project. Kobelco SK500LC machines are also more durable than ever, able to withstand the rigors of the toughest job sites. It all adds up to new levels of value that are a step ahead of the times. While focusing on the global environment of the future, Kobelco offers next-generation productivity to meet the need for lower life cycle costs and exceed the expectations of customers the world over.



# SK500<sub>LC</sub>



# Evolution Continues, with Improved Fuel Efficiency.

**23%**  
Higher fuel efficiency means "Efficiency"

The new arm interflow system more efficiently controls hydraulic fluid flow, and significant reduction of in-line resistance and pressure loss boosts fuel efficiency by about 23%\*. The electronic-control common-rail engine features high-pressure fuel injection and multiple injection with improved precision. It is fitted with an EGR cooler which greatly reduce PM and NOx emissions and meets TIERIII Standards.

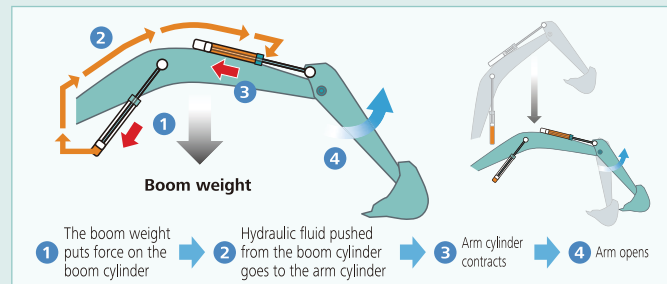
\* Compared to S-mode on the SK480LC-8



## Hydraulic System: Revolutionary Technology Saves Fuel

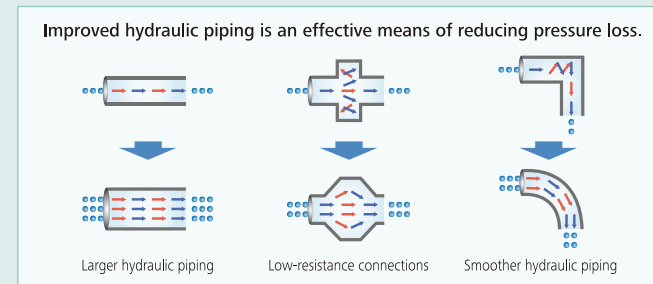
### Arm Interflow System **NEW**

When lowering the boom, this system uses the downward force generated by the boom's weight to push fluid to the shovel arm. This greatly reduces the need to apply power from outside the system.



### Hydraulic Circuit Reduces Energy Loss

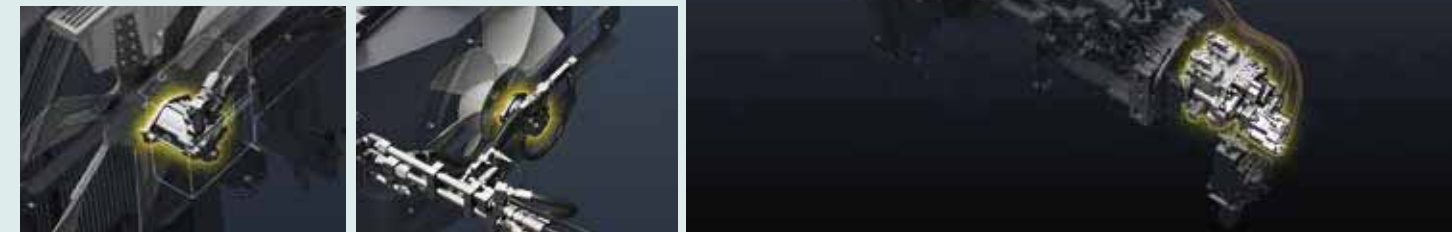
We have made every effort to enhance fuel efficiency by minimizing hydraulic pressure resistance, improving the hydraulic line layout to control friction resistance loss and minimizing valve resistance.



## Built to operate in tough working environment

### Hydraulic Drive for Engine Cooling Fan; **NEW** Independent Oil Cooler Fan

Hydraulic drive optimizes the cooling fan rotation speed to improve fuel economy and reduce noise. Also, the independent oil cooler fan better matches cooling to the hydraulic oil temperature, for optimal oil temperature control.

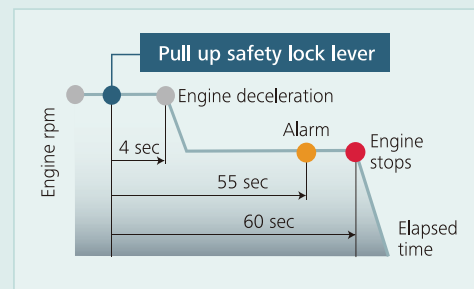
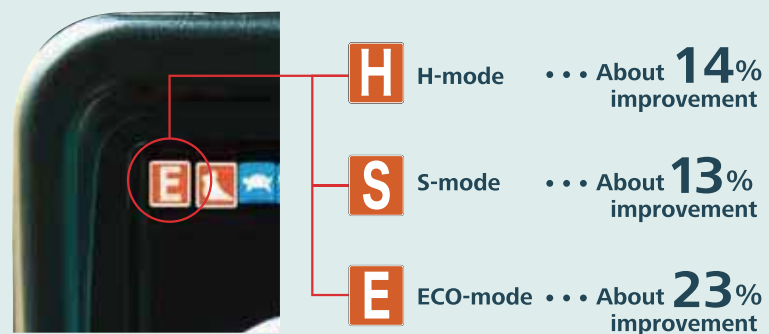


## In Pursuit of Improved Fuel Efficiency

### Operation Mode

Fuel consumption is lower in H-mode/S-mode/ECO-mode in comparison with the previous model (Generation 8).

■ Compared to previous models



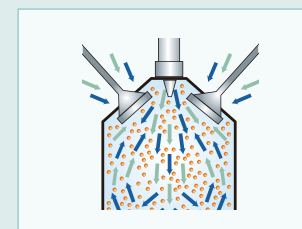
### AIS (Auto Idle Stop)

If the boarding/disembarking lever is left up, the engine will stop automatically. This eliminates wasteful idling during standby, saving fuel and reducing CO<sub>2</sub> emissions as well.

## Pursuing maximum fuel efficiency

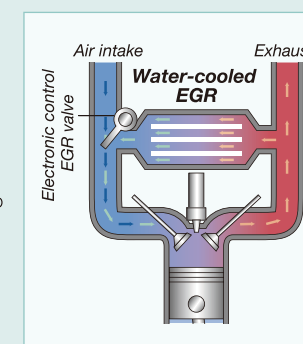
### Common rail system

High-pressure injection atomizes the fuel, and more precise injection improves combustion efficiency. This also contributes to better fuel economy.



### EGR cooler

While ensuring sufficient oxygen for combustion, cooled emission gases are mixed with the intake air and recirculated into the engine. This reduces oxygen content and lowers combustion temperature.





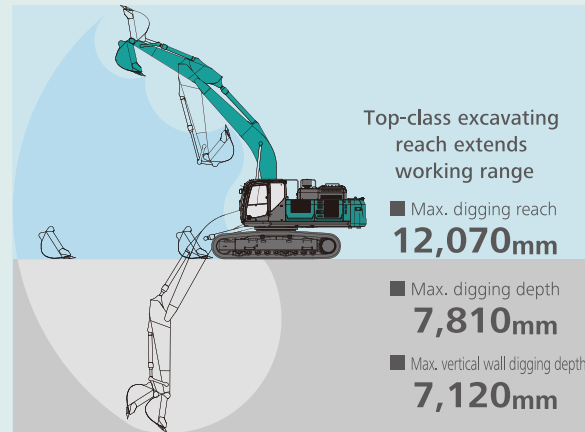
# More Power and Higher Efficiency

The highly efficient hydraulic system minimizes fuel consumption while maximizing power. With nimble movement and ample digging power, this excavator promises to improve your job productivity.

## Superior Digging Force

■ Max. Bucket Digging Force	■ Max. Arm Crowding Force
Normal: <b>267 kN</b>	Normal: <b>203 kN</b>
With power boost: <b>292 kN</b>	With power boost: <b>222 kN</b>

## Get More Done Faster with Superior Operability



## Heavy Lift

10% more hydraulic pressure (Heavy Lift) means greater lifting power, at close radius, allowing for smooth and steady operation while moving heavy objects.



## Independent Travel

Selecting Independent Travel dedicates one hydraulic pump to travel and one to the attachment on a continuous basis, allowing for a smooth and constant movement speed even while swinging or using the boom or attachment. With Independent Travel, safely carrying a large pipe across a job site is a breeze.



## A Light Touch on the Lever <sup>NEW</sup> Means Smoother, Less Tiring Work

It takes 38%\* less effort to work the operation lever, which reduces fatigue over long working hours or continued operations.

\*Compared to SK480LC-8



## Top Class Traveling Force

Powerful traveling force and pulling force deliver plenty of speed when climbing slopes or negotiating bad roads, and the agility to change direction swiftly and smoothly.



■ Drawbar Pulling Force: **415kN**

## Operator-friendly Features Include Controls that Are Easy to See, Easy to Use



### Multi-Display in Color

Brilliant colors and graphic displays are easy to recognize on the LCD multi-display in the console. The display shows fuel consumption, maintenance intervals, and more.

- 1 Analog gauge provides an intuitive reading of fuel level and engine water temperature
- 2 Green indicator light shows low fuel consumption during operation
- 3 Fuel consumption/Switch indicator for rear camera images
- 4 Digging mode switch
- 5 Monitor display switch

### One-Touch Attachment Mode Switch

A simple flick of a switch converts the hydraulic circuit and flow amount to match attachment changes. Icons help the operator to confirm the proper configuration at a glance.

14:39  
Analog-style gauges  
CONSUMPTION  
FUEL CONSUMPTION  
MAINTENANCE  
MAINTENANCE INTERVALS  
16:25  
FLOW RATE 130 L/min  
PRESSURE A 30 MPa  
FLOW RATE 260 L/min  
PRESSURE A 25 MPa  
PRESSURE B 25 MPa  
Rearview monitoring (Option)  
14:33  
7.1h  
INDEPENDENT TRAVEL MODE  
14:33  
7.1h  
HEAVY LIFT

\*Specifications may vary in your area.



# Increased Power, with Enhanced Durability to Maintain the Machine's Value

Increase in  
productivity  
means  
"Power"

Structural design increases strength,  
while eliminating hydraulic problems.  
Enhanced durability takes  
productivity to a new level.



## Improved Filtration System Reliability

Clean, contaminant-free fuel and hydraulic fluid are essential to stable performance. The improved filtration systems reduce the risk of mechanical trouble and enhance longevity and durability.

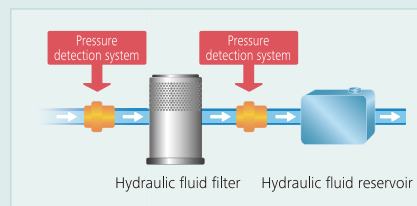
### Hydraulic Fluid Filter **NEW**

Recognized as the best in the industry, our premium fine filter separates out even the smallest particles. New cover prevents contamination when changing filters.



### Hydraulic Fluid Filter Clog **NEW** Detector

Pressure sensors at the inlet and outlet of the hydraulic fluid filter monitor differences in pressure to determine the degree of clogging. If the difference in pressure exceeds a predetermined level, a warning appears on the multi-display, so any contamination can be removed from the filter before it reaches the hydraulic fluid reservoir.



### Increased Filtering Capacity for **NEW** Hydraulic Oil

Two filters are installed for returning hydraulic oil, to curb clogging and increase the durability and reliability of the hydraulic equipment.



\*Specifications may vary in your area.

### Pump Drain Filter **NEW**

Newly installed pump drain filter boosts pump reliability.



### Pilot Filter

A new cartridge-type pilot filter simplifies maintenance.



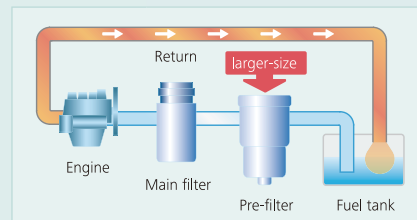
### Double-Element Air Cleaner

The large-capacity element features a double-filter structure that keeps the engine running clean even in industrial environments.



### Fuel Filter **NEW**

The pre-filter, with built-in water separator maximizes filtering performance.





# Comfortable Cab Is Now Safer than Ever

A work environment that is quieter and more comfortable. A cab that puts the operator first is key to improved safety.



## Comfort

### Super-Airtight Cab



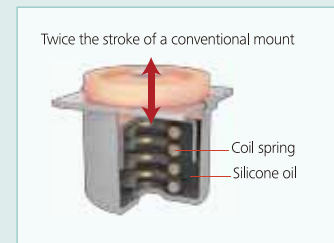
The high level of air-tightness keeps dust out of the cab.

### Quiet Inside

The high level of air-tightness ensures a quiet, comfortable cabin interior.

### Low Vibration

Coil springs absorb small vibrations, and high suspension mounts filled with silicone oil reduce heavy vibration. The long stroke achieved by this system provides excellent protection from vibration.



### Air Conditioner <sup>NEW</sup> Register behind the Seat



The large air-conditioner has registers on the back pillars that blow from behind and to the right and left of the operator's seat. They can be adjusted to put a direct flow of cool/warm air on the operator, which means a more comfortable operating environment.

### More Comfortable Seat Means Higher Productivity



Seat suspension absorbs vibration



Seat recliner can be pushed back flat



Double slides allow adjustment for optimum comfort

### Interior Equipment Adds to Comfort and Convenience



Bluetooth installed AM/FM stereo radio



USB/AUX



12V power outlet



Spacious storage tray



Large cup holder



### Large Cab Is Easy to Get In and Out of

The expanded cab provides plenty of room for a large door, more headroom and smoother entry and exit.

## Safety

### ROPS Cab

ROPS (Roll-Over-Protective Structure)-compliant cab clears ISO standards (ISO-12117-2: 2008) and ensures greater safety for the operator should the machine tip over.



### Expanded Field of View for Greater Safety



Left and right rear-view mirrors



Bottom clearance mirror



Hammer for emergency exit

Greater safety assured by rearview mirrors on left and right.



Standard rear swing flashers and rear work lights.



Rear view camera (optional)

### Broad View Liberates the Operator

The front window features one large piece of glass without a center pillar on the right side for a wide, unobstructed view.





### Remote Monitoring for Peace of Mind

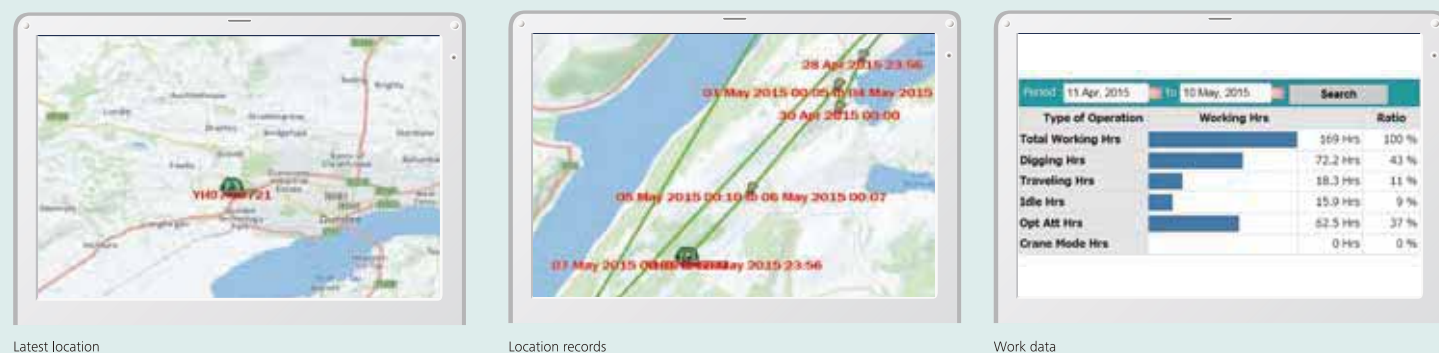
KOMEXS (Kobelco Monitoring Excavator System) uses satellite communication and internet to relay data, and therefore can be deployed in areas where other forms of communication are difficult.

When a hydraulic excavator is fitted with this system, data on the machine's operation, such as operating hours, location, fuel consumption, and maintenance status can be obtained remotely.

### Direct Access to Operational Status

#### Location Data

Accurate location data can be obtained even from sites where communications are difficult.



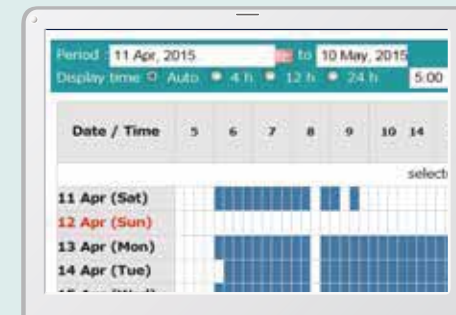
Latest location

Location records

Work data

### Operating Hours

- A comparison of operating times of machines at multiple locations shows which locations are busier and more profitable.
- Operating hours on site can be accurately recorded, for running time calculations needed for rental machines, etc.



Daily report

### Fuel Consumption Data

- Data on fuel consumption and idling times can be used to indicate improvements in fuel consumption.

Work mode	Working Hrs	Total Fuel Consumption
H mode	2:06	24.5 L
S mode	0:00	0.0 L
E mode	169:19	1489.7 L
<b>TOTAL</b>	<b>171:25</b>	<b>1514.2 L</b>

Fuel consumption

### Graph of Work Content

- The graph shows how working hours are divided among different operating categories, including digging, idling, traveling and optional operations.



Work status

### Maintenance Data and Warning Alerts

#### Machine Maintenance Data

- Provides maintenance status of separate machines operating at multiple sites.
- Maintenance data is also relayed to KOBELCO service personnel, for more efficient planning of periodic servicing.

Model	Serial No.	Hour Meter	Engine Oil
SK135SRLC-3/SK140SRL	YH07-09721	734 Hr	434
SK135SRLC-3/SK140SRL	YH07-09789	73 Hr	429
SK210LC-9	YQ13-10454	960 Hr	58
SK210LC-9	YQ13-10481	549 Hr	498
SK75SR-	YT08-30374		

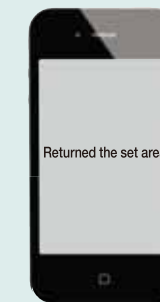
Maintenance

#### Warning Alerts

- This system warns an alert if an anomaly is sensed, preventing damage that could result in machine downtime.

### Alarm Information Can Be Received through E-mail

- Alarm information or maintenance notice can be received through E-mail, using a computer or cell phone.



Alarm messages can be received on mobile device.

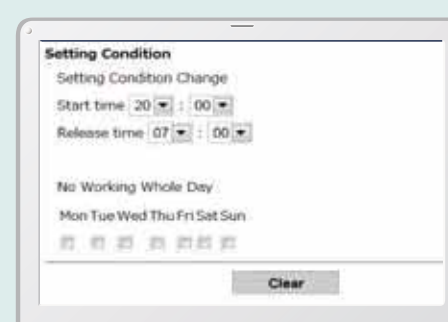
### Daily/Monthly Reports

- Operational data downloaded onto a computer helps in formulating daily and monthly reports.

### Security System

#### Engine Start Alarm

- The system can be set an alarm if the machine is operated outside designated time.



Engine start alarm outside prescribed work time

#### Area Alarm

- It can be set an alarm if the machine is moved out of its designated area to another location.



Alarm for outside of reset area



# Efficient Maintenance Keeps the Machine in Peak Operating Condition



## Machine Information Display Function

- Displays only the maintenance information that's needed, when it's needed
- Self-diagnostic function provides early-warning detection and display of electrical system malfunctions
- Service-diagnostic function makes it easier to check the status of the machine
- Record function for previous breakdowns including irregular and transient malfunction

Examples of displaying maintenance information

## Easy, On-the-Spot Maintenance NEW

There is ample space in the engine compartment for a mechanic to do maintenance work inside. The distance between steps are lower so entry and exit is easier. And the mechanic can work in comfort, without contortions or unnatural body positions. Finally, the hood is lighter and easier to raise and lower.



Step/Hand rail



Double-element air cleaner

## Ground Level Access

Laid out for easy access to radiator and cooling system elements.



Left side

## More Efficient Maintenance Inside the Cab



Easy-access fuse box

More finely differentiated fuses make it easier to locate malfunctions.



Air conditioner filters

Internal and external air conditioner filters can be easily removed without tools for cleaning.

## Easy Cleaning



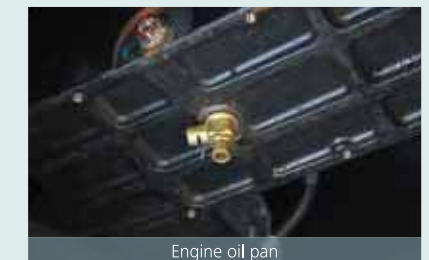
Crawler frame

Special sloped crawler side frame design is easily cleaned of mud.



Detachable two-piece floor mat

Detachable two-piece floor mat with handles for easy removal. A floor drain is located under the floor mat.



Engine oil pan

Engine oil pan equipped with drain valve.

## Maintenance Work, Daily Checks, Etc., Can Be Done from Ground Level

The layout allows for easy access from the ground for many daily checks and regular maintenance tasks.



Engine oil filter



Pilot filter



Pump drain filter



Right side



Pre-filter with water separator

- 1 Engine oil filter
- 2 Pilot filter
- 3 Pump drain filter
- 4 Pre-filter with water separator

Replacement cycle:  
**1,000**  
hours

## Highly Durable Premium-fine Filter

The high-capacity hydraulic oil filter incorporates glass fiber with superior cleaning power and durability.





## Engine

Model	HINO P11C-UP
Type	Water-cooled, 4cycle 6cylinder direct injection type diesel engine with intercooler turbo-charger
No. of cylinders	6
Bore and stroke	122 mm x 150 mm
Displacement	10.52 L
Rated power output	Net 257 kW/1,850 min <sup>-1</sup> (ISO 14396 : without fan)
Max. torque	Net 1,400 N·m/1,400 min <sup>-1</sup> (ISO 14396 : without fan)

## Hydraulic System

Pump	
Type	Two variable displacement pumps + One gear pump
Max. discharge flow	2 x 370 L/min, 1 x 63.5 L/min
Relief valve setting	
Excavating circuits (main)	31.4 Mpa {320 kgf/cm <sup>2</sup> }
Power boost	34.3 Mpa {350 kgf/cm <sup>2</sup> }
Travel circuit	34.3 Mpa {350 kgf/cm <sup>2</sup> }
Swing circuit	26.0 Mpa {265 kgf/cm <sup>2</sup> }
Pilot control circuit	5.0 Mpa {50 kgf/cm <sup>2</sup> }
Pilot control pump	Gear type
Main control valve	8-spool
Oil cooler	Air cooled type

## Swing System

Swing motor	Axial piston motor
Parking brake	Wet multiple plate, hydraulic operated automatically
Swing speed	7.6 min <sup>-1</sup>
Swing torque	183 kN·m (SAE)

## Travel System

Travel motors	2 x axial-piston, two-step motors
Travel brakes	Hydraulic brake per motor
Parking brakes	Wet multiple plate
Travel shoes	50 each side
Travel speed (high/low)	5.4/3.4 km/h
Drawbar pulling force	415 kN (ISO 7464)
Gradeability	70 % (35 deg)
Ground clearance	510 mm

## Cab & Control

Cab	
All-weather, sound-suppressed steel cab mounted on the high suspension mounts filled with silicone oil and equipped with a heavy, insulated floor mat.	
Control	
Two hand levers or two foot pedals for forward and backward operations of each track independently.	

## Boom, Arm & Bucket

Boom cylinders	170 mm x 1,590 mm
Arm cylinder	190 mm x 1,970 mm
Bucket cylinder	160 mm x 1,410 mm / 170 mm x 1,429 mm*

\*ME specification

## Refilling Capacities & Lubrications

Fuel tank	638 L
Cooling system	47.4 L
Engine oil	42.5 L
Travel reduction gear	2x15 L
Swing reduction gear	2x5 L
Hydraulic oil tank	371 L tank oil level 631 L hydraulic system

## Working Ranges

Unit: m

Range	Arm	ME 6.50m		
		ME 2.60m	Short 3.00m	Standard 3.45m
a- Max. digging reach		11.25	11.77	12.07
b- Max. digging reach at ground level		11.01	11.54	11.84
c- Max. digging depth		6.82	7.36	7.81
d- Max. digging height		11.15	11.14	10.92
e- Max. dumping clearance		7.18	7.72	7.58
f- Min. dumping clearance		3.07	3.23	2.78
g- Max. vertical wall digging depth		6.11	6.60	7.04
h- Min. swing radius		4.96	5.28	5.14
i- Horizontal digging stroke at ground level		3.87	5.21	6.09
j- Digging depth for 2.4 m (8') flat bottom		6.66	7.20	7.67
Bucket capacity ISO heaped m <sup>3</sup>		3.40	2.10	1.90

## Digging Force (ISO 6015)

Unit: kN

Arm length	ME 2.60m	Short 3.00m	Standard 3.45m
Bucket digging force	282/308*	270/295*	267/292*
Arm crowding force	239/261*	224/245*	203/222*

\*Power Boost engaged.

## Dimensions

Unit: mm

Arm length	ME 2.60m	Short 3.00m	Standard 3.45m
A Overall length	12,060	12,210	12,160
B Overall height (to top of boom)	4,330	3,800	3,610
C Overall width		3,350	
D Overall height (to top of cab)		3,380	
E Ground clearance of rear end*		1,260*	
F Ground clearance*		510*	
G Tail swing radius	3,880	3,800	
G' Distance from center of swing to rear end	3,880	3,800	
H Tumbler distance		4,400	
I Overall length of crawler		5,460	
J Track gauge		2,750	
K Shoe width		600	
L Overall width of upperstructure		2,980	

\*Without including height of shoe lug.

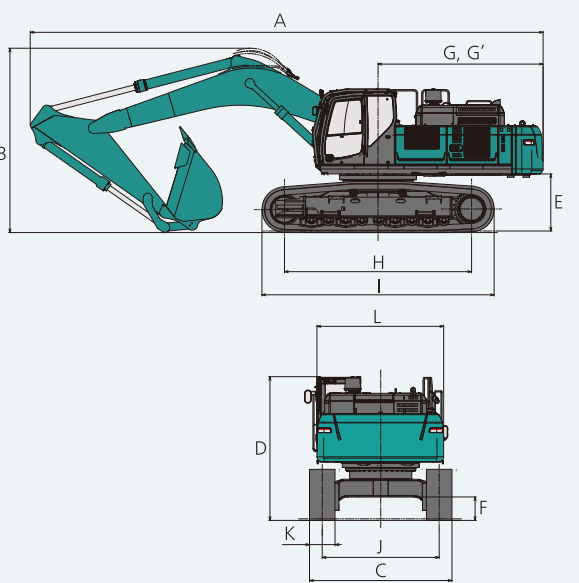
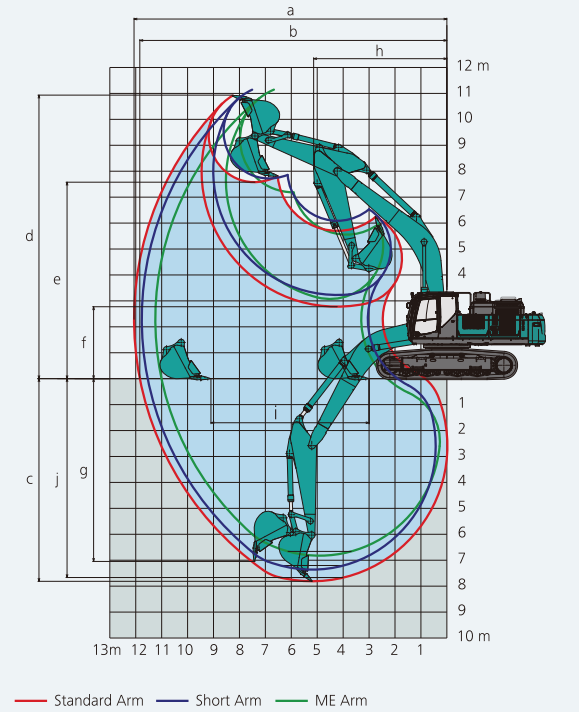
## Operating Weight & Ground Pressure

In standard trim, with standard boom, 3.45 m arm, and 1.90 m<sup>3</sup> ISO heaped bucket

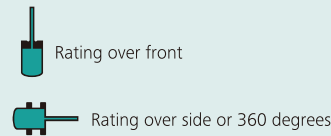
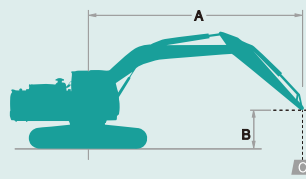
Shaped	Triple grouser shoes (even height)			
	600	800	900	
Shoe width	mm	600	800	900
Overall width of crawler	mm	3,350	3,550	3,650
Ground pressure	kPa (kgf/cm <sup>2</sup> )	87(0.89)	67(0.68)	60(0.61)
Operating weight	kg	50,800	52,100	52,700

In standard trim, with 6.50 m ME boom, 2.60 m ME arm, and 3.40 m<sup>3</sup> ISO heaped bucket

Shaped	Triple grouser shoes (even height)			
	600	800	900	
Shoe width	mm	600	800	900
Overall width of crawler	mm	3,350	3,550	3,650
Ground pressure	kPa (kgf/cm <sup>2</sup> )	90(0.92)	70(0.71)	62(0.63)
Operating weight	kg	52,700	54,100	54,600







A: Reach from swing centerline to arm top  
 B: Arm top height above/below ground  
 C: Lifting capacities in Kilograms  
 Bucket: Without bucket  
 Relief valve setting: 34.3 MPa {350 kgf/cm<sup>2</sup>}

SK500LC-10		Boom: 7.00 m Arm: 3.45 m Bucket: without Counterweight: 9,800 kg Shoe: 600 mm (Heavy Lift)												
		3.0 m		4.5 m		6.0 m		7.5 m		9.0 m		At Max. Reach		Radius
B	A	Rating over front	Rating over side or 360 degrees	Rating over front	Rating over side or 360 degrees	Rating over front	Rating over side or 360 degrees	Rating over front	Rating over side or 360 degrees	Rating over front	Rating over side or 360 degrees	Rating over front	Rating over side or 360 degrees	
9.0m	kg											*10,300	*10,300	7.76 m
7.5m	kg											*10,040	8,850	8.85 m
6.0m	kg							*10,640	*10,640	*10,120	8,550	*9,850	7,640	9.59 m
4.5m	kg			*18,030	*18,030	*13,800	*13,800	*11,730	11,010	*10,610	8,330	*9,950	6,950	10.04 m
3.0m	kg			*22,790	21,620	*16,110	14,400	*13,000	10,500	*11,290	8,060	*10,300	6,590	10.26 m
1.5m	kg			*14,750	*14,750	*18,000	13,650	*14,150	10,060	*11,950	7,800	10,370	6,470	10.25 m
G.L.	kg			*18,040	*18,040	*19,070	13,210	*14,930	9,750	12,370	7,620	10,640	6,610	10.01 m
-1.5m	kg	*13,000	*13,000	*25,630	20,010	*19,240	13,060	*15,140	9,620	12,300	7,560	11,380	7,040	9.53 m
-3.0m	kg	*22,190	*22,190	*24,180	20,240	*18,460	13,130	*14,550	9,670			*11,810	7,940	8.76 m
-4.5m	kg	*28,200	*28,200	*21,180	20,700	*16,360	13,440	*12,370	9,980			*11,980	9,780	7.63 m

SK500LC-10		Boom: 7.00 m Arm: 3.00 m Bucket: without Counterweight: 9,800 kg Shoe: 600 mm (Heavy Lift)												
		3.0 m		4.5 m		6.0 m		7.5 m		9.0 m		At Max. Reach		Radius
B	A	Rating over front	Rating over side or 360 degrees	Rating over front	Rating over side or 360 degrees	Rating over front	Rating over side or 360 degrees	Rating over front	Rating over side or 360 degrees	Rating over front	Rating over side or 360 degrees	Rating over front	Rating over side or 360 degrees	
9.0m	kg											*11,190	*11,190	7.36 m
7.5m	kg							*10,690	*10,690			*10,840	9,310	8.51 m
6.0m	kg							*11,230	*11,230	*10,710	8,420	*10,760	7,980	9.27 m
4.5m	kg			*19,540	*19,540	*14,560	*14,560	*12,250	10,870	*11,060	8,240	*10,830	7,230	9.74 m
3.0m	kg					*16,760	14,150	*13,430	10,380	*11,640	7,990	10,930	6,850	9.96 m
1.5m	kg					*18,430	13,470	*14,460	9,970	*12,190	7,760	10,820	6,750	9.95 m
G.L.	kg			*13,560	*13,560	*19,220	13,130	*15,080	9,710	12,360	7,620	11,140	6,920	9.70 m
-1.5m	kg	*10,190	*10,190	*23,760	20,060	*19,100	13,050	*15,080	9,630	*12,170	7,630	*11,740	7,430	9.21 m
-3.0m	kg	*22,140	*22,140	*23,220	20,350	*17,990	13,190	*14,150	9,750			*11,890	8,490	8.41 m
-4.5m	kg	*25,290	*25,290	*19,710	*19,710	*15,320	13,600					*11,680	10,710	7.22 m

SK500LC-10		ME Boom: 6.50 m ME Arm: 2.60 m Bucket: without Counterweight: 11,200 kg Shoe: 600 mm (Heavy Lift)												
		3.0 m		4.5 m		6.0 m		7.5 m		9.0 m		At Max. Reach		Radius
B	A	Rating over front	Rating over side or 360 degrees	Rating over front	Rating over side or 360 degrees	Rating over front	Rating over side or 360 degrees	Rating over front	Rating over side or 360 degrees	Rating over front	Rating over side or 360 degrees	Rating over front	Rating over side or 360 degrees	
9.0m	kg											*12,290	*12,290	6.23 m
7.5m	kg							*12,370	12,240			*10,700	*10,700	7.56 m
6.0m	kg					*13,290	*13,290	*12,180	12,170			*9,970	*9,970	8.41 m
4.5m	kg					*15,080	*15,080	*12,920	11,780			*9,680	8,990	8.92 m
3.0m	kg					*17,100	15,480	*13,920	11,330	*12,300	8,730	*9,710	8,480	9.17 m
1.5m	kg					*18,650	14,820	*14,790	10,960	*12,560	8,570	*10,040	8,380	9.15 m
G.L.	kg					*19,280	14,490	*15,200	10,740			*10,760	8,670	8.89 m
-1.5m	kg			*24,810	22,160	*18,870	14,460	*14,800	10,730			*12,050	9,470	8.34 m
-3.0m	kg	*28,590	*28,590	*22,140	*22,140	*17,080	14,700					*12,420	11,190	7.45 m
-4.5m	kg			*16,970	*16,970							*11,180	*11,180	6.06 m

- Notes:**
- Do not attempt to lift or hold any load that is greater than these lift capacities at their specified lift point radius and heights. Weight of all accessories must be deducted from the above lift capacities.
  - Lift capacities are based on machine standing on level, firm, and uniform ground. User must make allowance for job conditions such as soft or uneven ground, out of level conditions, side loads, sudden stopping of loads, hazardous conditions, experience of personnel, etc.
  - Arm top defined as lift point.
  - The above lifting capacities are in compliance with ISO 10567. They do not exceed 87% of hydraulic lifting capacity or 75% of tipping load. Lifting capacities marked with an asterisk (\*) are limited by hydraulic capacity rather than tipping load.
  - Operator should be fully acquainted with the Operator's and Maintenance Instructions before operating this machine. Rules for safe operation of equipment should be adhered to at all times.
  - Lift capacities apply to only machine as originally manufactured and normally equipped by KOBELCO CONSTRUCTION MACHINERY CO., LTD.

## STANDARD EQUIPMENT

- ENGINE**
- Engine, HINO P11C-UP, diesel engine with turbocharger and intercooler
  - Automatic engine deceleration
  - Auto Idle Stop (AIS)
  - Batteries (2 x 12V 108)
  - Starting motor (24V - 6 kW), 60 amp alternator
  - Automatic engine shut-down for low engine oil pressure
  - Engine oil pan drain cock
  - Double element air cleaner
  - Refueling pump
- CONTROL**
- Working mode selector (H-mode, S-mode and ECO-mode)
  - Power Boost
  - Heavy lift
- SWING SYSTEM & TRAVEL SYSTEM**
- Swing rebound prevention system
  - Straight propel system
  - Two-speed travel with automatic shift down
  - Sealed & lubricated track links
  - Grease-type track adjusters
  - Automatic swing brake
  - Travel alarm
  - Four track guides each side
- HYDRAULIC**
- Arm interflow system
  - Auto warm up system
  - Aluminum hydraulic oil cooler
  - Hydraulic fluid filter clog detector

## MIRRORS, LIGHTS & CAMERAS

- Two Rearview mirrors, Bottom clearance mirror
- Five front working lights(2cab 2Boom 1storage box)
- Swing flashers and rear work lights

## CAB & CONTROL

- ROPS CAB
- Two control levers, pilot-operated
- Horn, electric
- Cab light (interior)
- Luggage tray

## CONTROL

- Large cup holder
- Detachable two-piece floor mat
- Headrest
- Handrails

- Intermittent windshield wiper with double-spray washer
- Tinted safety glass

- Pull-up type front window and removable lower front window

- Easy-to-read multi-display color monitor

- Automatic air conditioner

- Emergency escape hammer

- Suspension seat

- Radio, AM/FM stereo with speaker

- Aux, USB

- KOMEXS

- Tow eyes

- Lower Under Cover

- Refueling pump

## OPTIONAL EQUIPMENT

- Mass Excavator specification
- Various optional arms
- Wide range of shoes
- Air suspension seat
- Rain visor (may interfere with bucket action)

- Cab guard
- Extra piping (Applicable for 7.0m boom)
- Rear view camera
- N&B piping

Note: Standard and optional equipment may vary. Consult your KOBELCO dealer for specifics.