



For Immediate Release

KOBELCO Introduces the SK1300DLC-11

April 13, 2026 – Katy, TX – We are pleased to introduce the new KOBELCO SK1300DLC-11 with a powerful 512 hp. Isuzu Tier 4F engine, a wide range of boom and arm combinations and is purpose built for building demolition. With variable front configurations this machine has a maximum reach of 130 feet. The machine's mass operating weight is 302,000 lbs. but can be disassembled for easy transport. The minimum transport weight of the base machine without the counterweight is 134,000 lbs. with no single component weight exceeding 39,800 lbs. making it easy to move the machine.



Built for Demolition: The machine comes with a separate demo digging front, 3-piece high reach, and 4-piece high reach multi-configuration front attachment. The high reach attachment comes with transport and storage stands, water spray system, electronic on-board lubrication system, quick hitch piping, boom and arm safety valves, 2-piece removable layered counterweight, removable track system with remote trans-lifter, energy saving ECO -Mode, in cab hydraulic pressure release, combination rotation and nibbler breaker with proportional hand controls, case drain line and filter, reversable fan, and has unlimited power boost mode (for Separate Boom Attachment).



Built for Comfort: The -11 series feature a cabin environment that has enhanced ergonomics and safety features with best-in-class cabin space and visibility. The operator's pilot levers move horizontally



without arching of the wrist, while also providing shorter lever strokes to deliver a swifter, more precise movement. Built for demolition, the sound suppressed 30° tilting cabin comes with an emergency lowering system. Includes a 270° camera system with switchable rear-under view camera or high reach attachment view, rear view mirrors, LED work lights, rear swing flashers, demolition Level II FOPS guard and bar type front guard, P5A safety glass, falling object deflector, cab interference prevention system, stability tip-over warning and public address speaker system for on the ground handsfree communication.

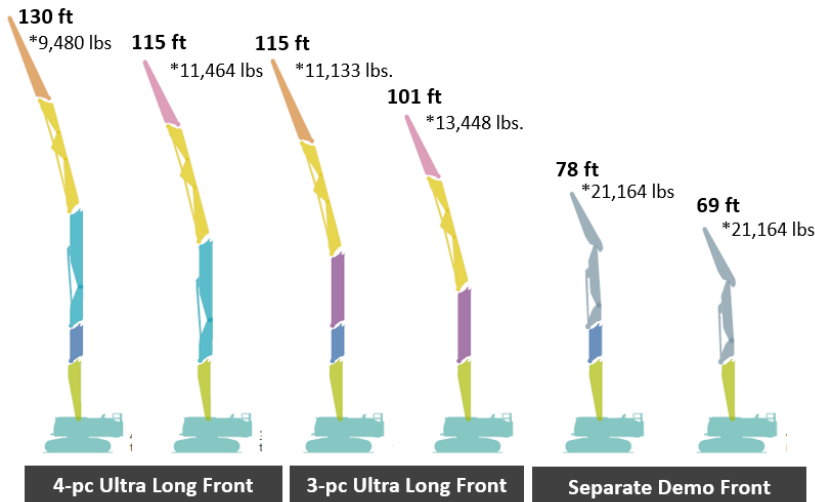
Multiple air conditioning and heater vents are directed towards the operator to maximize comfort. On the right-side console there is a jog dial that integrates multiple functions into a single user interface with the large 10-inch color monitor. This easy-to-operate menu screen facilitates reading of valuable information including work mode, maintenance intervals, and fuel consumption. To top it off, the cabin is equipped with an FM/AM, AUX, Bluetooth, hands-free telephone radio, smartphone holder, USB charger, and a 12V power outlet.

Added Value: KOBELCO has decades of experience in building demolition and therefore includes more standard features. Kobelco built the machine with an unmatched ability to use larger tools at greater heights. The KOBELCO commitment to value and quality includes a standard limited full machine warranty of 3-years or 3000-hour and a 5-year or 3000-hour engine emission warranty. This warranty is provided through KOBELCO and our dealer network.

Engine Spec: This 512 hp. Isuzu 6WG1 engine meets current U.S EPA Tier 4F and E.U Stage V emission requirements. The engine features a 15.7-liter, in-line 6-cylinder, known for its power and reliability in demanding applications. The engine is commonly used in various heavy-duty trucks, construction, and other industrial equipment. KOBELCO also currently uses this model engine in our SK850LC-11 excavator. Engine parts and service are provided directly through KOBELCO and our dealer network.

Attachment Configuration:

- 2-piece removable counterweight, removable track system with 4-point trans-lifter for upper carriage
- Long Insert boom (N2-A), Main front boom (N3/N4), Front Boom (N5/N6/N7)
- Standard front arm (N8-A pinned SK500), Semi-long front Arm (N8-B pinned SK350)
Machine capable of operating as 3pc/4pc high reach in multiple configurations or with "separate" demo digging boom
- Separate demo/digging boom assembly - With insert boom (N2-B) a max. height of 78 ft. with 21,164 lb. tool and working depth of 26 ft. Pinned for SK850 linkage.
- 3-piece and 4-piece UHR front Max. heights of 101 ft. with a 13,448 lb. tool, 115 ft. with 11,464 lb. tool and 130 ft. with 9,480 lb. tool with ultra-long insert. Pinned for SK500 when using standard front arm (N8-A) and SK350 when using semi-long arm (N8-B). Includes: Separate digging front items above plus Removable boom base with cylinders (N1), short boom insert (N2-B), long boom insert (N2-A), front and rear main boom (N3, N4), boom and arm (N5, N6, N7), and std. arm (N8-A), semi-long arm (N8-B).



*Tool Weight

*Tool size dependent upon its weight and the position of its center of gravity for proper operability Tool not included.

| Specs | 4-piece ultra long | | 3-piece ultra long | | Separate | |
|---|--------------------|-------------|--------------------|-------------|-------------|--------------|
| | 130 ft type | 115 ft type | 115 ft type | 101 ft type | With insert | STD separate |
| Front arm (semi long) N8-B | ● | | ● | | | |
| Front arm (STD) N8-A | | ● | | ● | | |
| Rear arm + Inter boom + Front boom N7+N6+N5 | ● | ● | ● | ● | | |
| Rear boom + main front boom N4+N3 | ● | ● | | | | |
| Insert boom (long) N2-A | | | ● | ● | | |
| Insert boom (short) N2-B | ● | | ● | | ● | |
| Integrated separate ATT | | | | | ● | ● |
| Main boom N1 | ● | ● | ● | ● | ● | ● |



About KOBELCO Construction Machinery

KOBELCO Construction Machinery USA offers industry-leading crawler cranes and crawler excavators that include zero tail swing, compact, standard, long-reach, mass excavation, recycling/scrap, and demolition models. KOBELCO is committed to producing quality machines with advanced productivity-boosting features, more standard equipment, and innovative technologies. So, when it comes to superior performance, efficiency, safety, and overall added value, KOBELCO truly is “Built Like No Other”.

For more information on the both purpose-built versions of the KOBELCO SK1300DLC-11 and other crawler excavators and crawler cranes, please visit www.KOBELCO-USA.com or contact:

Media Contact: Jordan Lumpkins
Marketing Manager
KOBELCO Construction Machinery USA Inc.
Email: Jordan.Lumpkins@KOBELCO.com

-end-



Release Photos:

Picture 1: KOBELCO SK1300DLC-11



Picture 2: KOBELCO SK1300DLC-11



Picture 3: KOBELCO SK1300DLC-11

